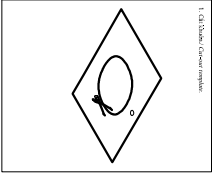
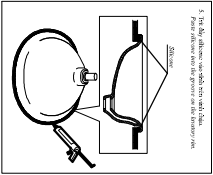


HƯỚNG DẪN CẮT BÀN ĐÁ VÀ LẮP ĐẶT
L/L7762* CUT-OUT COUNTER TABLE / INSTALLATION INSTRUCTIONS** **TOTO**

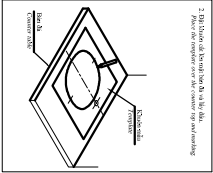
Mặt ngoài/ Finish wall



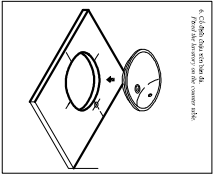
1. Cut Counter, Counter top



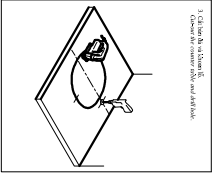
2. Fit the overflow, separate from sink table. Please refer to the position of the overflow on.



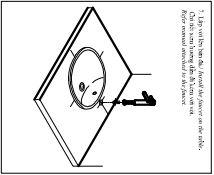
3. Fit the Overflow, fit Overflow hole on the sink. Please refer to the position of the overflow on the drawing.



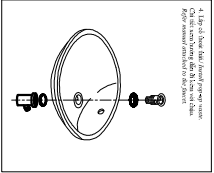
4. Check the sink with the sink. Please refer to the position of the overflow hole.



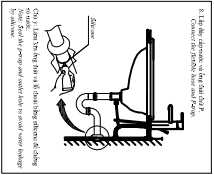
5. Cut the sink with the sink. Please refer to the position of the overflow hole.



6. Check the sink with the sink. Please refer to the position of the overflow hole.



7. Fit the sink with the sink. Please refer to the position of the overflow hole.



8. Check the sink with the sink. Please refer to the position of the overflow hole.

07TP290

